



**INSPIRATION**  
MINING CORP.

ISP:CSE

ISPNF:USA

A40GPX:WKN

# Exploring Saskatchewan's Newest **Copper-Gold** Discovery District

MAY 2026 INVESTOR PRESENTATION

# Disclaimer

*This presentation is strictly confidential, and any disclosure, use, copying and circulation of this presentation is prohibited without the consent of Inspiration Mining Corp. ("The Company").*

*The information contained in this presentation does not constitute or form part of, and should not be construed as, an offer or invitation to subscribe for or purchase the securities discussed herein in any jurisdiction. Neither this presentation nor any part of it shall form the basis of, or be relied upon in connection with any offer, or act as an inducement to enter into any contract or commitment whatsoever. No representation or warranty is given, express or implied, as to the accuracy of the information contained in this presentation.*

*This presentation contains certain forward-looking statements relating to the business, financial performance and results of the Company and/or the industry in which it operates. Forward-looking statements concern future circumstances and results and other statements that are not historical facts. The forward-looking statements, contained in this presentation, including assumptions, opinions and views of the Company or cited from third party sources are solely opinions and forecasts which are uncertain and subject to risks. A multitude of factors can cause actual events to differ significantly from any anticipated development. Neither the Company nor any such person's, officers or employees guarantee that the assumptions underlying such forward-looking statements are free from errors and omissions nor do any of them accept any responsibility for the future accuracy of the opinions expressed in this presentation or the actual occurrence of the forecasted developments.*

*The information contained herein has been prepared to assist the recipients in making their own evaluation on the Company and does not purport to contain all information that they may desire. In all cases, the recipients should conduct their own investigation and analysis of the Company, its business, prospects, results of operations and financial condition as well as any other information the recipients may deem relevant.*

*The Company does not make any representation or warranty, express or implied, as to the accuracy or completeness of this presentation or of the information contained herein and shall have no liability for the information contained in, or any omissions from, this presentation, nor for any of the written, electronic or oral communications transmitted to the recipients (including without limitation its directors, employees, representatives and advisors).*

*Neither the receipt of this presentation by any recipients, nor any information contained herein or supplied herewith or subsequently communicated in written, electronic or oral form to any person in connection with the contemplated issue of shares in the Company constitutes, or shall be relied upon as constituting, the giving of investment advice to any such person. Each person should make their own independent assessment of the merits of investing in the Company and should consult their own professional advisors. By receiving this presentation, you acknowledge and agree that you will be solely responsible for your own assessment of the market and the market position of the Company and that you will conduct your own analysis and are solely responsible for forming your own opinion of the potential future performance of the Company's business.*



# About Us

Inspiration Mining Corp. is engaged in the business of mineral exploration and the acquisition of mineral property assets in Canada. Inspiration's flagship projects are the Rottenstone North and Rottenstone West copper-gold projects located in Canada's newest copper-gold exploration camp and contiguous to Ramp Metals' flagship Rottenstone Project. **With less than 45 million shares currently outstanding Inspiration has tremendous leverage to any success in the ground.**



# Rottenstone North & West Projects

Copper-Gold – Athabasca Basin, Saskatchewan



**ROTTENSTONE NORTH**



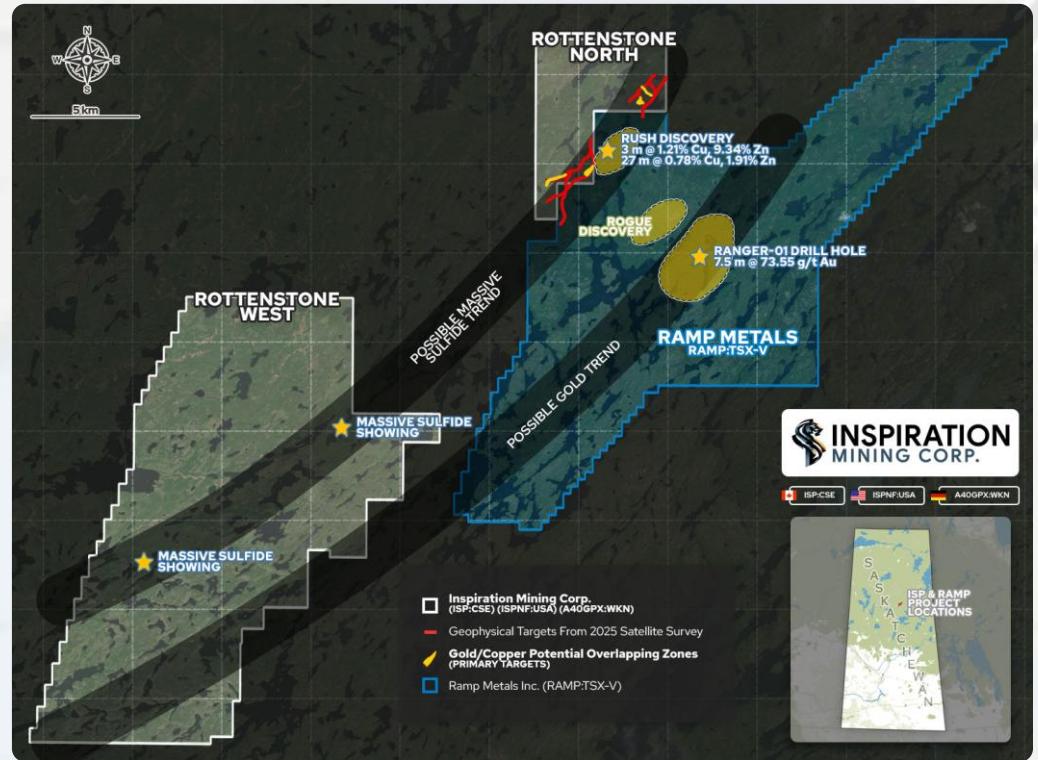
ISP:CSE    ISPNF:USA    A40GPX:WKN

# Project Overview

## Rottenstone North + West

The Rottenstone North (4,512 ha) & Rottenstone West (31,011 ha) gold and base metal properties are located within the Rottenstone Domain, a regional northeast-southwest geological corridor, that includes the past producing Rottenstone nickel-copper-platinum group elements-gold mine (Ni-Cu-PGE-Au), which from 1965-1968 produced some 26,057 tonnes of high-grade grading 3.28% Ni, 1.83% Cu and 9.63 g/t Pt+Pd+Au (Saskatchewan Mineral Deposits Index #09587).

The Projects are located along the same northeast-southwest trending geological structures that host multiple high-grade showings in the region, including 73.55 g/t Au over 7.5 metres at the Ranger Showing and 1.61% Cu at the Rush VMS discovery (see Ramp's news release dated June 17, 2024). Notably, historical work on the Rottenstone West Project identified multiple massive sulfide occurrences as early as the 1950s. These areas remain untested by modern exploration methods, presenting compelling targets for new discoveries within a top-tier mining jurisdiction.



**Ramp is also targeting a new copper discovery found during a mapping and sampling program (Ramp Metals news release dated Jan 20, 2025) that trends right into Inspiration's contiguous project.**

# Rush VMS Discovery\*

## District Scale Potential

Ramp Metals Inc. (TSXV: RAMP) has systematically advanced its Rottenstone SW property – contiguous and on-trend with Inspiration's land position – from a surface copper discovery in January 2025 to a confirmed and growing VMS system by April 2026. Over 29 drill holes have now been completed across two seasons, with hit rates of 8/10 holes in the 2025 program and 9/9 holes in the 2026 winter program.

### Rush Target – Selected Headline Results

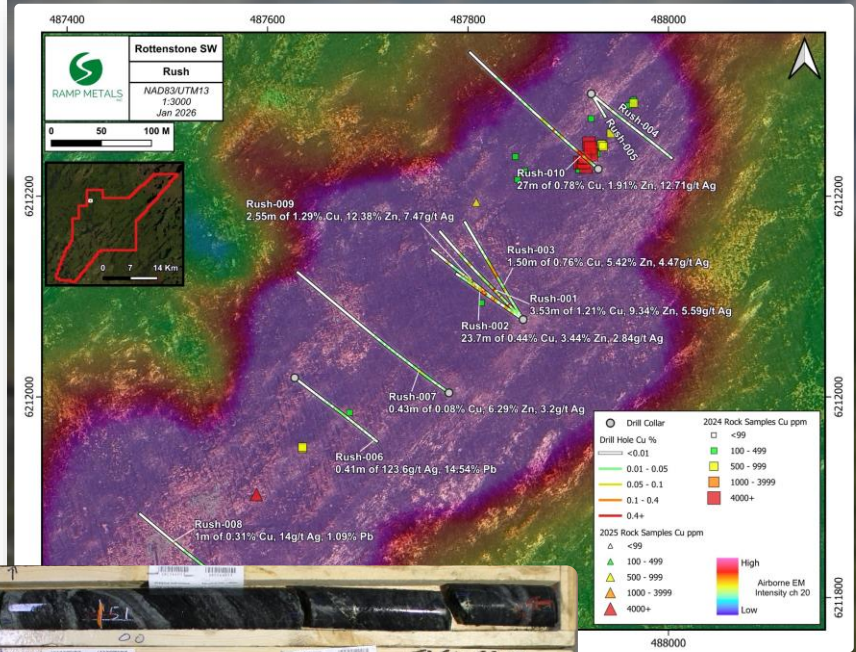
**Rush-001:** 1.21% Cu, 9.34% Zn, 5.59 g/t Ag over 3.53m

**Rush-002:** 0.44% Cu, 3.44% Zn, 2.84 g/t Ag over 23.70m

**Rush-009:** 1.29% Cu, 12.38% Zn, 0.28% Pb, 7.47 g/t Ag over 2.55m

**Rush-010:** 0.78% Cu, 1.91% Zn, 0.53% Pb, 12.71 g/t Ag over 27.00m

The 2026 winter program intersected VMS-style mineralization in all 9 holes drilled and identified a new deeper zone approximately 70m west of the known trend – confirming continuity and significant expansion potential. Ramp is now advancing additional targets including Redridge (2.4 km EM anomaly, soils up to 245 ppm Cu / 852 ppb Ag) and Runway (surface grabs returning Pt-Pd-Ni signatures). Assay results from the 2026 program are pending.



*This slide pertains to information about Ramp Metals' neighbouring Rottenstone SW property. Mineralization hosted on adjacent and/or nearby and/or geologically similar properties is not necessarily indicative of mineralization hosted on the company's properties*

# Upcoming Exploration

Rottenstone North + West



## AMRT Survey Complete

Targets defined by a recent AMRT survey are located along trend and parallel to the Rush Discovery corridor, with the strongest anomalies concentrated in the southern part of the Project. Inspiration believes these represent excellent drill-ready potential – with technical teams now in the final stages of drill hole planning ahead of the maiden program.



## Drill Permits Acquired

Drill permit granted for Rottenstone North. Drilling plans finalized – program expected to launch shortly.



"We are strategically positioned along trend with recent discoveries and have cutting-edge satellite data identifying multiple gold-copper targets. Our technical team is finalizing drilling plans right now, and we anticipate launching our first drilling program shortly, at a time with historically high commodity prices."

- Charles Desjardins, CEO



# Bentley Project

Uranium – Athabasca Basin, Saskatchewan



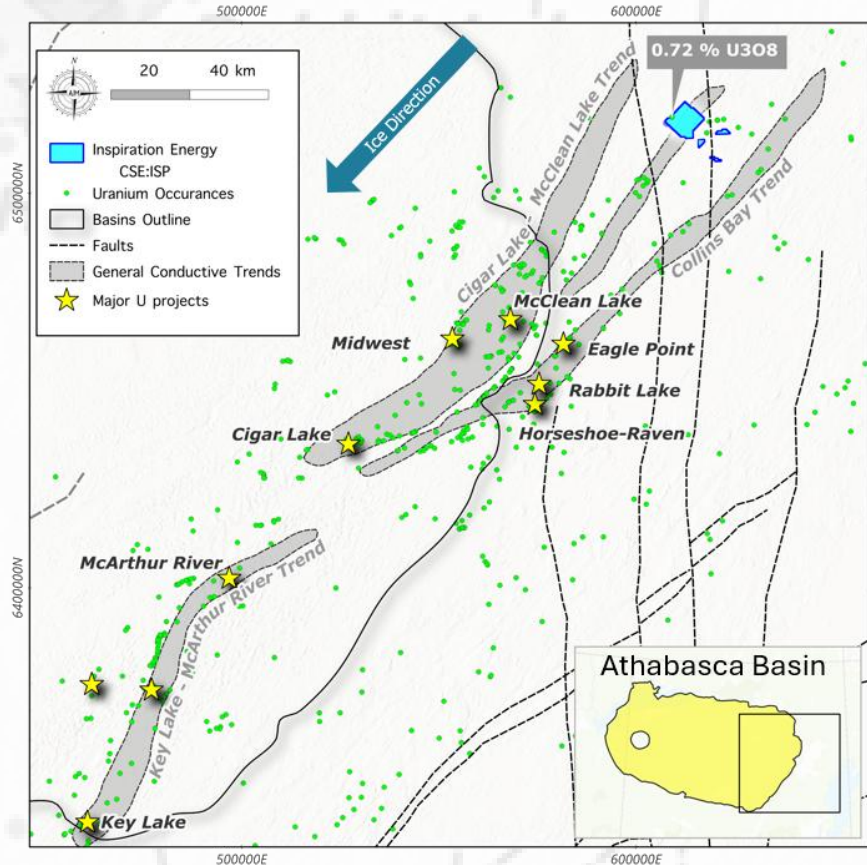
ISP:CSE    ISPNF:USA    A40GPX:WKN



# Overview

## Bentley Project

The Bentley Project is comprised of four mineral licenses encompassing a total land area of ~5,710ha (57km<sup>2</sup>) and is located 75 kilometers northeast of Cameco's Rabbit Lake mine. The Project sits on a potentially parallel structure to the Collins Bay Conductive trend that hosts the Rabbit Lake, Collins Bay and Eagle Point deposits. This environment has the potential for basement-hosted Uranium mineralization analogous to the Eagle Point model.

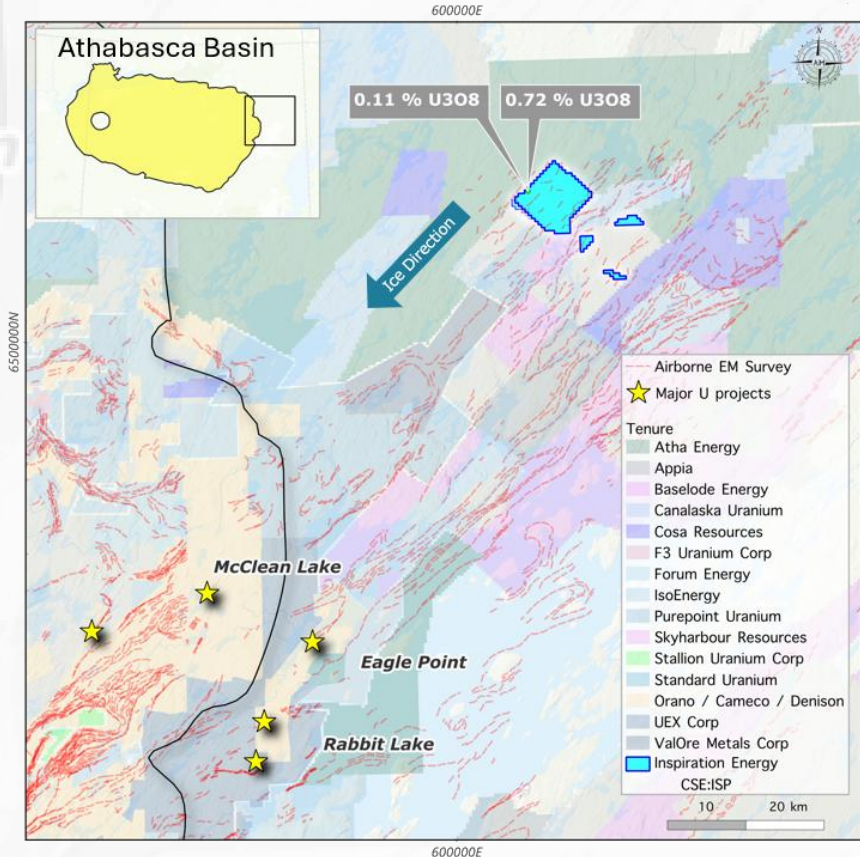


# Exploration Targets

## Bentley Project

McClellan

The most notable uranium showing on the property is located at the northern tip of the eastern shoreline of an unnamed small lake, ~15.3km to the east-southeast of Bentley Lake's eastern shore. Mineralization is found within a boulder of migmatitic biotite gneiss, corresponding to radiometric anomaly F-4, with scintillometer readings of 3900 counts per second (cps). Further analysis of the boulder revealed a U3O8 value of 0.11% (0.09% U) and 0.03% ThO2. Another boulder proximal to the first corresponds to radiometric anomaly F-3 and comprises quartzose biotite gneiss, yielding scintillometer readings of 1500 cps. Assay results returned 0.72% U3O8 (0.69% U) and 1.98% ThO2.



# Maraschino Project

Uranium – Thelon Basin, Nunavut



 **MARASCHINO**

# Overview

## Maraschino Project

10 km



**PELILY PROSPECT**

**RUBY PROSPECT**

**CHERRY PROSPECT**

**RUMBLE PROSPECT**

**ATHA ENERGY CORP**

**LAKESIDE WEST PROSPECT**

**LAKESIDE EAST PROSPECT**

**ORANO**

**ORANO**

**FORUM ENERGY METALS**

**AGNICO EAGLE**

The Maraschino Project is comprised of six properties, consisting of 2 primary prospects and 4 pipeline prospects, all possessing compelling exploration opportunities.

The region's first uranium showing was discovered in 1974 within the Baker Lake area in the Thelon Basin, which sparked exploration activity in the area. A second rush of exploration from 2000 to 2010 saw regional work hunting for unconformity-type uranium deposits similar to that of the Athabasca Basin. Approximately 160 million pounds of uranium has been defined in the Thelon Basin to date.

# Pelly Prospect

## Maraschino Project

The Pelly Prospect comprises 1,366 ha and is located on the Thelon Basin unconformity 145km WNW of Baker Lake. Historic work identified lake sediment geochemical anomalies and uranium showings on the property, with follow-up work identifying VLF basement conductors south of the uranium showings. Limited prospecting was completed following the results of a historic airborne survey, however, historic sampling returned a highlight of 369.1 ppm U. The property encompasses the PRMT2 exploration target.

The PRMT2 target lies 225 km from Baker Lake and is an extension of the Amer / McDonald fault system; a contact between the Rae Domain granites and the Thelon Formation of the Dubawnt Supergroup sediments. Clusters of high raw uranium counts (radiometric) are associated with the intersections of interpreted NW-SE and NE-SW structures. An ENE-trending fault contact between the locally outcropping granite and quartzites boulder conglomerate (Whart Gp, Thelon Fm) features boulders that are strongly radioactive altered, bleached and hematized.

# ATHA ENERGY CORP

ISP:CSE ISPNF:USA A40GPX:WKN

3 km



369.1 U PPM

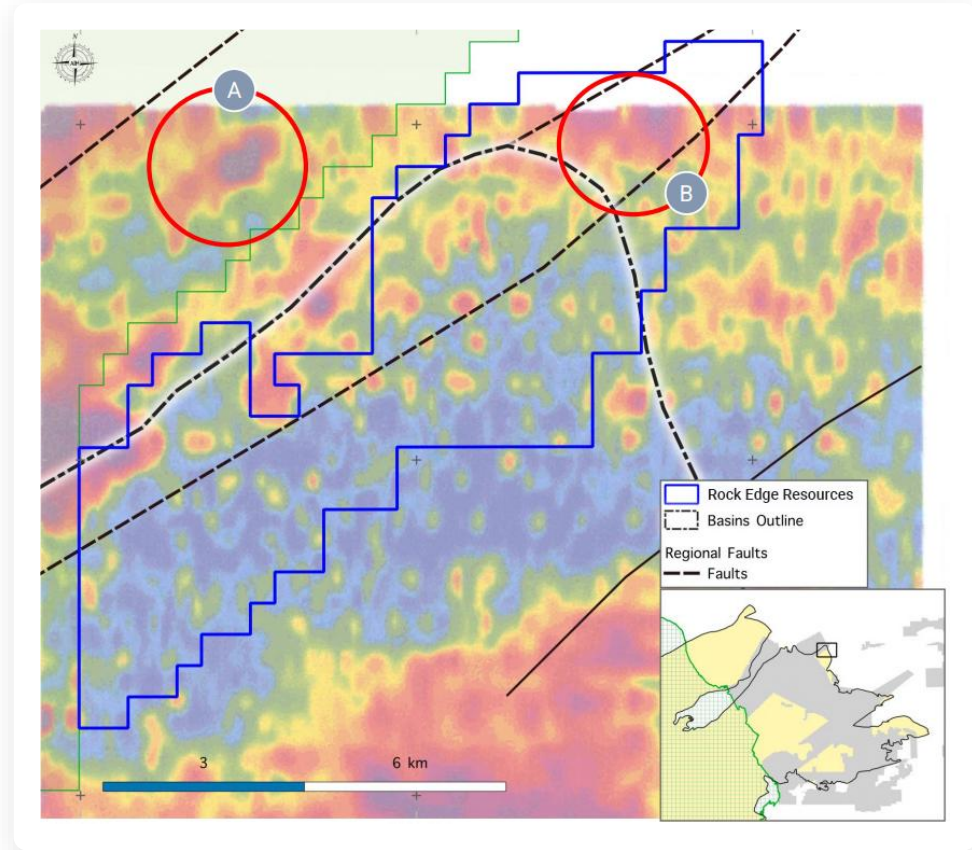
# PELLY PROSPECT

PRMT2

# Ruby Prospect

## Maraschino Project

The Ruby Prospect comprises 4,057 ha and is located 170km NW of Baker Lake. The prospect covers the northern edge of the Thelon Basin and is underlain by the Archean Amer group consisting of metapelites. A historic airborne magnetic survey identified a single unusual low resistivity response at the northern edge of the prospect. This response has a NE strike associated with Amer sediment cover but is a well-defined local response that could be alteration within the sediments.



# Meet The Team



**Charles Desjardins**  
**CEO & PRESIDENT**

Mr. Desjardins has 30+ years of public company experience in finance and management. He is President and CEO of Tandem Capital Group Inc. and has served as president of several TSX Venture-listed mineral exploration and technology companies.



**James Place**  
**DIRECTOR**

Mr. Place is a BC-registered professional geoscientist with 30+ years of experience in aggregate, heavy construction and engineering, spanning exploration, permitting, testing, development, production, marketing and reclamation across northern and coastal BC.



**Lorne McCarthy**  
**DIRECTOR**

Mr. McCarthy has 40+ years of experience in the Junior Resource Sector and has served on several public company boards. He was also a Vancouver-area Realtor for over 30 years and has built strong relationships across provincial and federal government.



**Doug McFaul**  
**CFO**

Mr. McFaul has 30+ years of experience in financial services and capital markets, including public company operations, regulatory requirements, financial reporting, capital raising and shareholder relations. He holds a BBA from the University of Alaska Fairbanks.



**Troy Marfleet**  
**ADVISOR**

Troy Marfleet, P.Geol., has worked in uranium exploration since 2010 and contributed to three discoveries in the Athabasca and Thelon Basins. He has experience with sandstone and basement-hosted deposits and has planned and executed multiple drill programs.

# Share Structure

## Exchanges



## Capitalization

Shares Outstanding	<b>42,447,729</b>
--------------------	-------------------

“Management believes that Inspiration is a compelling growth story that merits attention and has significant leverage to any success in the ground. We expect 2026 to be a breakout year for Inspiration.”

- **Charles Desjardins, CEO & President**





## Inspiration Mining Corp.

1240-789 W Pender St.

Vancouver, BC, V6C 1H2

 [info@inspirationminingcorp.com](mailto:info@inspirationminingcorp.com)

 [Inspirationminingcorp.com](http://Inspirationminingcorp.com)

Connect With Us



[@inspirationminingcorp](#)



# INSPIRATION MINING CORP.

ISP:CSE

ISPNF:USA

A40GPX:WKN